

Kimbolton Crescent, Stevenage, SG2 8RW

Geoffrey Matthew Property Management are delighted to offer for let this spacious two bedroom Mid Terrace house. The accommodation offered includes large kitchen with appliances suitable for use as kitchen/diner, lounge, two double bedrooms and family bathroom. Enclosed rear garden.

The property is situated off The Hertford Road on the south side of Stevenage, giving easy access to both Stevenage Town Centre & Knebworth. This location also benefitting from a nearby Supermarket and a range of other local amenities

Available early March.

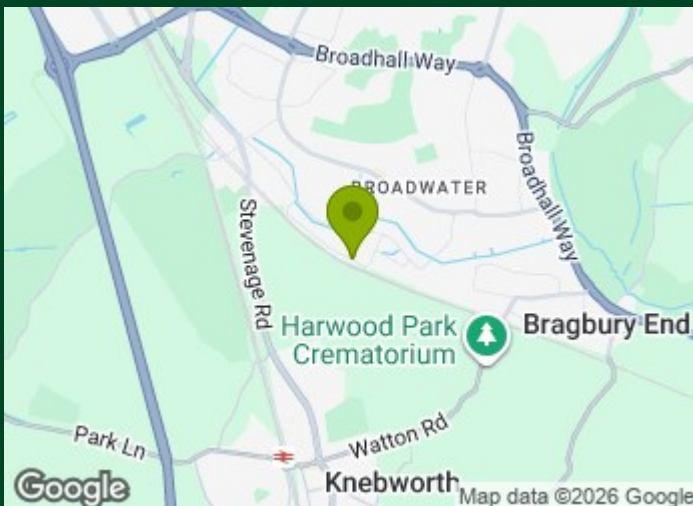
A holding deposit equivalent to one weeks rent is payable to apply for this property.

£1,400 Per Calendar Month

Kimbolton Crescent, Stevenage, SG2 8RW



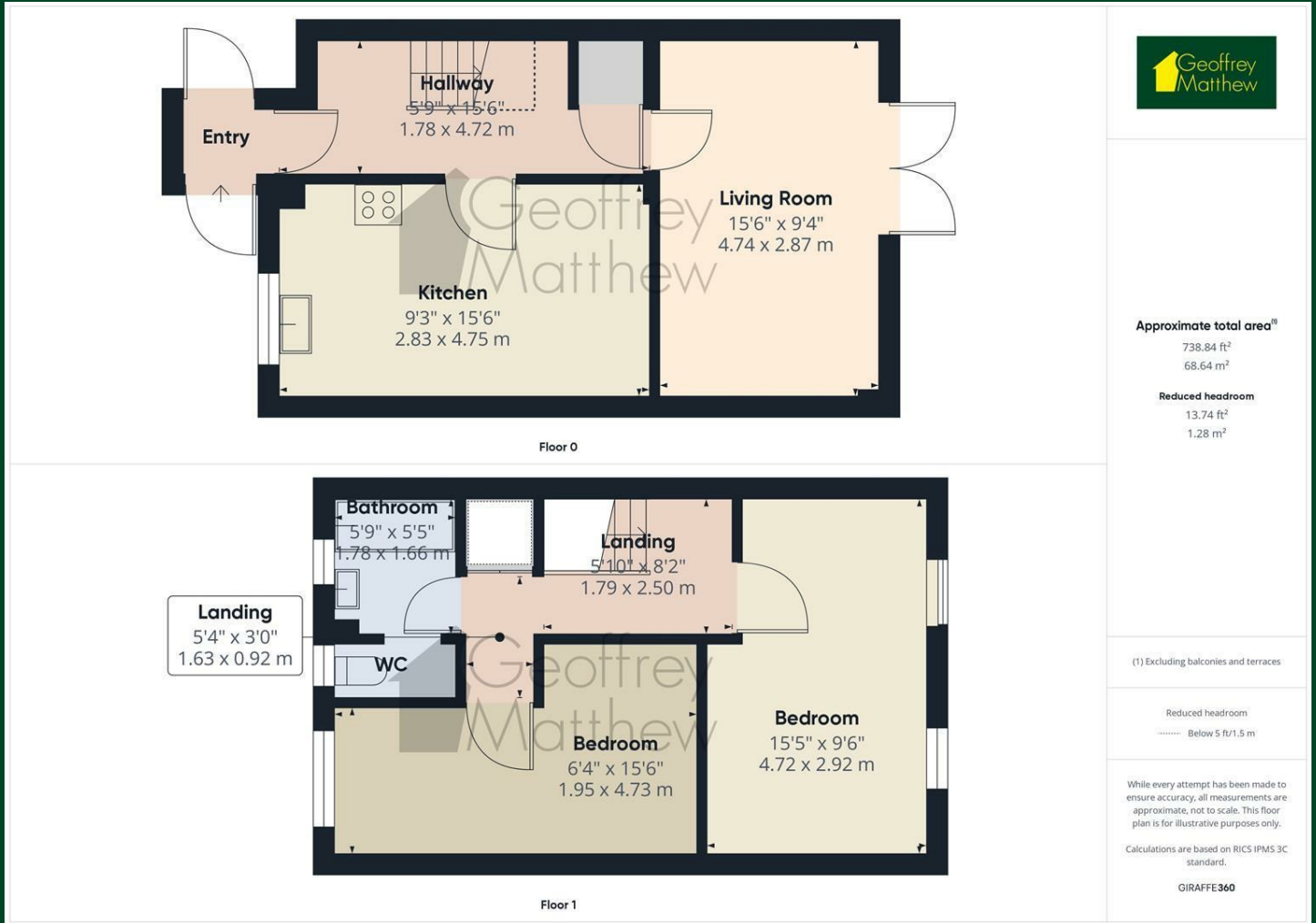
- Two Bedroom Mid Terrace House
- Lounge
- Front & Rear Gardens
- Roebuck Area
- Two Double Bedrooms
- Council Tax Band C
- Large Kitchen/Diner
- Gas Central Heating
- EPC Band C



[Directions](#)



Floor Plan



Council Tax Details

Stevenage Council Band C

These particulars, whilst believed to be accurate are set out as a general outline only for guidance and do not constitute any part of an offer or contract. Intending purchasers should not rely on them as statements of representation of fact, but must satisfy themselves by inspection or otherwise as to their accuracy. No person in this firm's employment has the authority to make or give any representation or warranty in respect of the property.

